

Business Connection Partners

WorkSource Seattle-King County

Workforce Development and Readiness Partners (GOV/EDU/CBO)



A proud partner of the AmericanJobCenter network

WorkSource®

WorkSource® is a statewide **network** of partners from government, education, and community-based organizations coming together to provide services via funded programs and other workforce resources to workers, job seekers, and employers.

The **overarching goal** is to align education systems, government agencies, and community-based organizations with business and industry. Ensuring workforce needs with a skilled and job-ready workforce to meet business needs, along with supporting a more diverse workforce and improving career pathways for underserved populations.

The Workforce Development Council of Seattle-King County

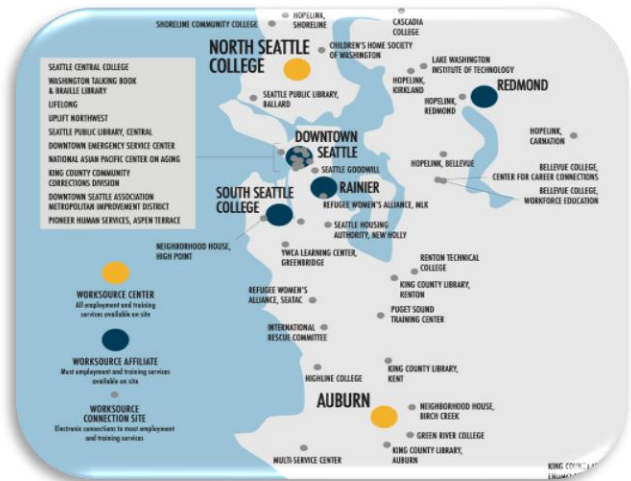
In partnership with business leaders as well as state and local partners, the **Workforce Development Council of Seattle-King County (WDC)** has a few roles and one is overseeing the local Seattle-King County public **WorkSource®** system, as a part of the **American “One-Stop” Job Center Network**, centered-around the [WIOA Act](#) and [DOL Programs](#).

WorkSource® in **Seattle-King County** provides workforce employment and training services to a wide variety of barriered populations, and businesses through interagency partnerships, leveraged resources, and the delivery of **no cost** services through a network of geographically targeted “one-stop” locations and online.

The Workforce Innovation and Opportunity Act (WIOA)

The **Workforce Innovation and Opportunity Act (WIOA)** was signed into law on July 22, 2014. WIOA is landmark legislation that was designed to strengthen and improve our nation's public workforce system and help get Americans with [significant barriers](#) to employment, into high-quality jobs and careers, along with helping employers hire and retain skilled workers.

WorkSource® Seattle-King County



[WorkSource Seattle-King County Locations & Partners](#)

WorkSource® Centers and Affiliates

- Auburn (*Center*)
- North Seattle College (*Center*)
- Downtown Seattle/YWCA (*Affiliate*)
- Rainer (*Affiliate*)
- Redmond (*Affiliate*)
- South Seattle College (*Affiliate*)

Each location has dedicated workforce partners to assist job seekers with employment services, training resources, and referrals both on location and virtually. In addition to assisting business customers in navigating available tools, programs, services and resources (Inquiry info below).

WorkSource® Connection Sites

Our local system has over 40+ local public workforce partners educating, training and supporting underserved populations to help find new opportunities, discover career pathways and gain new skills.

WorkSource® Business Customers

For general inquiries:
Please visit this link and submit an “Employer Inquiry”
www.worksourceskc.org/business-services

Business Connection Partners

WorkSource Seattle-King County

Workforce Development and Readiness Partners (GOV/EDU/CBO)



A proud partner of the AmericanJobCenter network

WorkSource® Centers & Affiliates Business Connection Partners (Target Population Supported)

Asian Counseling and Referral Service (ACRS):

Dislocated Workers / Immigrants & Refugees
Yong Lim Oshie – yonglim@acrs.org

Boys & Girls Clubs of King County: Youth (16-24)

Jessica Summerton-Moore (she/her)
jsmoore@positiveplace.org

Dept. of Social & Health Services (DSHS):

Low Income ([WorkFirst](#) / [TANF](#))
Sarah Sweeney – sarah.sweeney@dshs.wa.gov

Division of Vocational Rehab (DVR):

Persons with Disabilities
Brent Masters - mastebh@dshs.wa.gov

Dept. of Services for the Blind (DSB):

Carl Peterson - carl.peterson@dsb.wa.gov

El Centro de la Raza:

Youth (16-24) / Immigrants & Refugees
Maria Casarez - mcasarez@elcentrodelaraza.org

Evergreen Goodwill: Youth (16-24)

Monique Edwards
Monique.edwards@evergreengoodwill.org

ESD/Yes Vets: Veterans

North King County:
Michael Crawford – Michael.crawford@esd.gov
South King County:
Cliff Gocha - Clifford.gocha@esd.wa.gov.

Job Corps: Youth (16-24)

Marco Cassador – cassador.marco@jobcorps.org

King County Children, Youth and Young Adults

Division (CYYAD): Youth (16-24)
YouthSource: Tukwila Location
Korey Stozier - kstozier@kingcounty.gov

Shoreline Community College: [Career Center](#)
Pratna Kao - pratna.kao@kingcounty.gov

WorkSource® Centers & Affiliates Business Connection Partners (Target Population Supported)

Neighborhood House: Low income / Immigrants &

Refugees
Ali Scego – alis@nhwa.org

Pacific Associates: Dislocated Workers

Heather Stapleton – hstapleton@pacassoc.com

TRAC: Dislocated Workers / Immigrants & Refugees

Mike Hayden – mike@tracassoc.com

Urban League: Youth (16-24)

Chris Rossman – crossman@urbanleague.org

YWCA: Low Income / Immigrants & Refugees

Youth (16-24)
Mike Schwartz – schwartz@ywcaworks.org

Partner in Employment (PIE):

Low Income / Immigrants & Refugees
Mohamed Abdirahman –
mohamed@partnerinemployment.org

WorkSource® Connection Site Partners (Target Population Supported)

Children's Home Society of Washington:

Immigrants & Refugees / Youth (16-24)
Hannah Hutchins – hannah.hutchins@chs-wa.org

Downtown Emergency Service Center (DESC)

Homeless
Timothy Jolliff - tjolliff@desc.org

Hopelink: - Multiple Eastside locations

Homeless / Low Income / Immigrants & Refugees
Makenzie Kneeland – mkneeland@hopelink.org

International Rescue Committee:

Immigrants & Refugees
Ryan Smith - Ryan.Smith@rescue.org

Multi-Service Center: Youth (16-24) / Low Income

Maju Qureshi - majuq@mschelps.org

WorkSource® Connection Site Partners (Target Population Supported)

National Asian Pacific Center on Aging (NAPCA)

Mature Workers (55+)

Hakan Yilmaz - hakan@napca.org

Neighborhood House:

Immigrants & Refugees / Low Income

Birch Creek: Marla Brown - marlab@nhwa.org

Highpoint: Greg Kusumi - gregk@nhwa.org

Pioneer Human Services:

Justice Involved (Second Chance)

Naomi Paige - Naomi.Paige@p-h-s.com

Puget Sound Training Center:

Immigrant & Refugees

Krissy Escobar - krissyae@pstrainingcenter.com

Refugee Women's Alliance (ReWA):

Immigrant & Refugees

Lauren Farinas - lauren@rewa.org

Seattle Goodwill:

Low Income / Immigrant & Refugees

Iqbal Halimi

Mohammad.Halimi@evergreengoodwill.org

Seattle Housing Authority:

Homeless / Low income

James Hunter - james.hunter@seattlehousing.org

Uplift Northwest:

Homeless / Low income

Max Churaisin - maxc@upliftnw.org

YWCA Learning Center (Greenbridge):

Immigrant & Refugees / Youth (16-24)

Olivier Santos - osantos@ywcaworks.org

WorkSource® Connection Site Partners Community and Technical Colleges

Bellevue College

Fabienne Mouton - fabienne.mouton@bellevuecollege.edu

Cascadia College

Erika Miller - emiller@cascadia.edu

Green River College

Cathy Alston - calston@greenriver.edu

Highline College

Loyal Allen - lallen@highline.edu

Lake Washington Institute of Technology

Amber Hisatake - amber.hisatake@lwtwch.edu

North Seattle College

Meredith Bane - meredith.bane@seattlecolleges.edu

Renton Technical College

Bo Dong - bdong@rtc.edu

Seattle Central College

Adria Harris - adria.harris@seattlecolleges.edu

South Seattle College

Lisa Lee - lisa.lee@seattlecolleges.edu

Shoreline Community College

Katie Rousso - krousso@shoreline.edu

WorkSource® Connection Site Partners Library Employer Partnerships

King County Library System - Multiple Locations

Jeff Kempe - jhkempe@kcls.org

Seattle Public Library System

Community Partnerships and Government Relations

Kiersten Nelson - kiersten.nelson@spl.org

Updated February 2024